



## Trio Scraper® Superior high traffic entrance matting

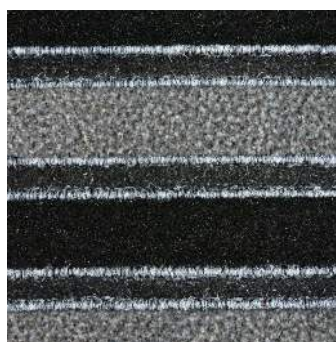


- Superior high traffic entrance matting
- Install in recessed mat wells or loose-lay with bevelled edging.
- Anti-slip latex backing.
- Suitable for recessed matwells or lay to surface with bevelled edging applications.
- Available with optional edging.
- Colours are specified with each order
- Suitable for glue down or lay to surface applications. Product Height: 13mm. Product walk-off Height: 6-9mm Recess preparation height: 10-12mm
- Suitable for high-volume footfall in commercial locations.

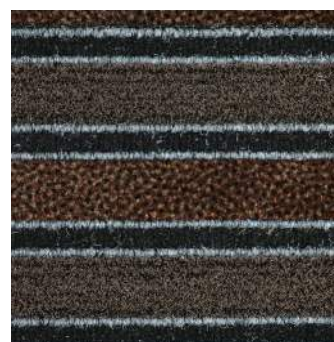
### Styles Available



Grey



Anthracite



Brown

## Parts

Part Number	Size	Colour	Weight (kg)
PMD010001	2 m x 20 m	Anthracite	
PMD010001C	2 m x per linear metre	Anthracite	
PMD050001	2 m x 20 m	Brown	
PMD050001C	2 m x per linear metre	Brown	
PMD060001	2 m x 20 m	Grey	
PMD060001C	2 m x per linear metre	Grey	

## Technical Specifications

<b>Material</b>	100% polypropylene needle ribs alternated with woven brush and drying stripes in polyamide
<b>Backing</b>	Anti-slip latex
<b>Product Height</b>	13mm
<b>Product Weight</b>	3.5 kg/m <sup>2</sup>
<b>Cleaning Method</b>	Vacuum clean regularly
<b>Fire Tested to</b>	Flame retardency EFL
<b>COO (Country of Origin)</b>	BE
<b>Guarantee</b>	5 years

## Additional Information



Installation Guide



Trio Scraper | Trio Brush | Super Scraper



Trio Scraper Declaration of performance



Wheel chair accessibility

